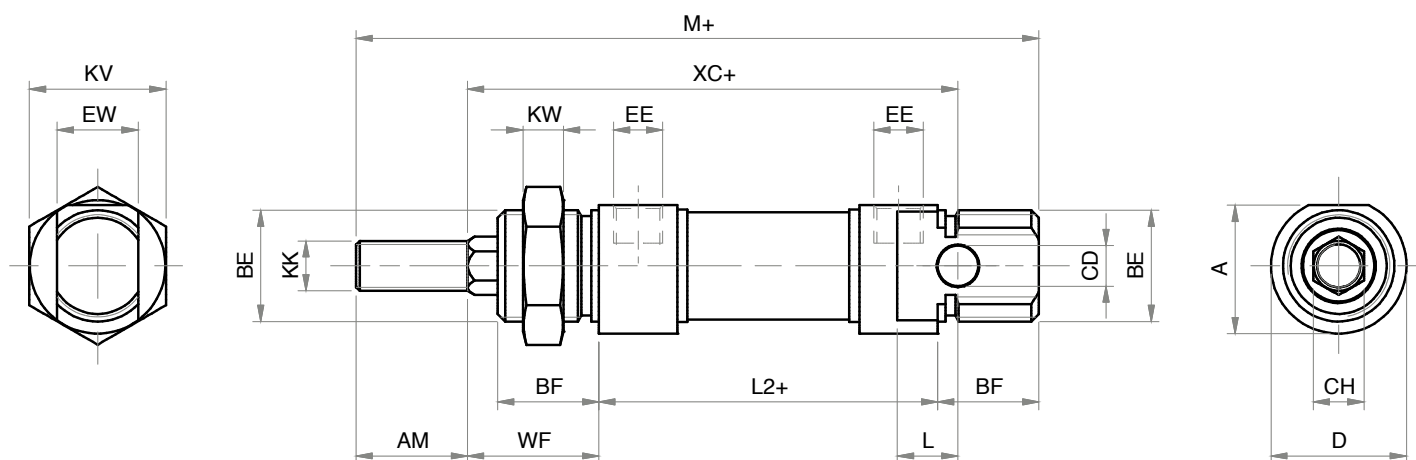
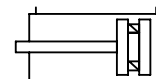



DOPPIO EFFETTO MAGNETICO ANTIROTAZIONE CON STELO ESAGONALE
ANTI-ROTATION MAGNETIC DOUBLE ACTING WITH HEXAGONAL ROD


Note: dado stelo compreso nella fornitura
 Note: rod nut included in the supply

DIMENSIONI - DIMENSIONS

Ø	16	20	25
A	18	25,5	28,5
AM	16	20	22
BE	M16x1,5	M22x1,5	M22x1,5
BF	18	20	22
Ø CD	6	8	8
CH	6	8	10
Ø D	19	27	30
EE	M5	G 1/8"	G 1/8"
	12	16	16
KK	M6	M8	M10x1,25
KV	22	27	27
KW	8	11	11
L	9	12	12
L2+	53	67	68
M+	109	131	140
WF	22	24	28
XC+	82	95	104

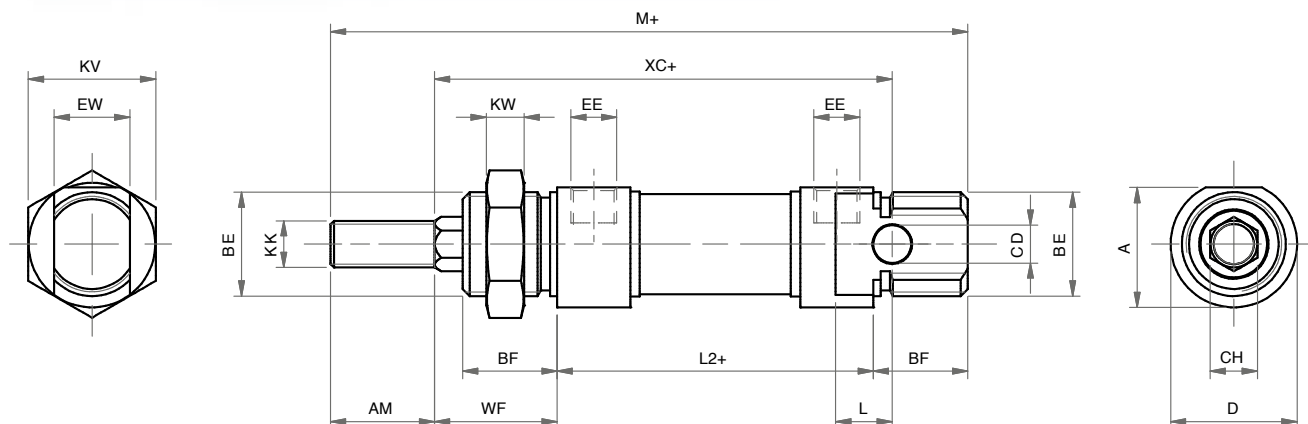
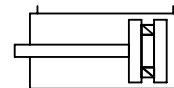
+ = lunghezza corsa - stroke length

Ø CORSE STANDARD - STANDARD STROKES

Ø 16 10 - 25 - 50 - 80 - 100 - 125 - 160 - 200 - 250 - 320 - 400 - 500 - 600 - 700 - 800 - 900 - 1000

Ø 20 10 - 25 - 50 - 80 - 100 - 125 - 160 - 200 - 250 - 320 - 400 - 500 - 600 - 700 - 800 - 900 - 1000

Ø 25 10 - 25 - 50 - 80 - 100 - 125 - 160 - 200 - 250 - 320 - 400 - 500 - 600 - 700 - 800 - 900 - 1000

DOPPIO EFFETTO MAGNETICO ANTIROTAZIONE CON STELO ESAGONALE
ANTI-ROTATION MAGNETIC DOUBLE ACTING WITH HEXAGONAL ROD


Note: dado stelo compreso nella fornitura
 Note: rod nut included in the supply

DIMENSIONI - DIMENSIONS

Ø	16	20	25
A	18	25,5	28,5
AM	16	20	22
BE	M16x1,5	M22x1,5	M22x1,5
BF	18	20	22
Ø CD	6	8	8
CH	6	8	10
Ø D	19	27	30
EE	M5	G 1/8"	G 1/8"
EW	12	16	16
KK	M6	M8	M10x1,25
KV	22	27	27
KW	8	11	11
L	9	12	12
L2+	53	67	68
M+	109	131	140
WF	22	24	28
XC+	82	95	104

+ = aggiungere lunghezza corsa (mm) - add stroke length (mm)

Ø CORSE STANDARD - STANDARD STROKES

016 10 - 25 - 50 - 80 - 100 - 125 - 160 - 200 - 250 - 320 - 400 - 500

020 10 - 25 - 50 - 80 - 100 - 125 - 160 - 200 - 250 - 320 - 400 - 500

025 10 - 25 - 50 - 80 - 100 - 125 - 160 - 200 - 250 - 320 - 400 - 500