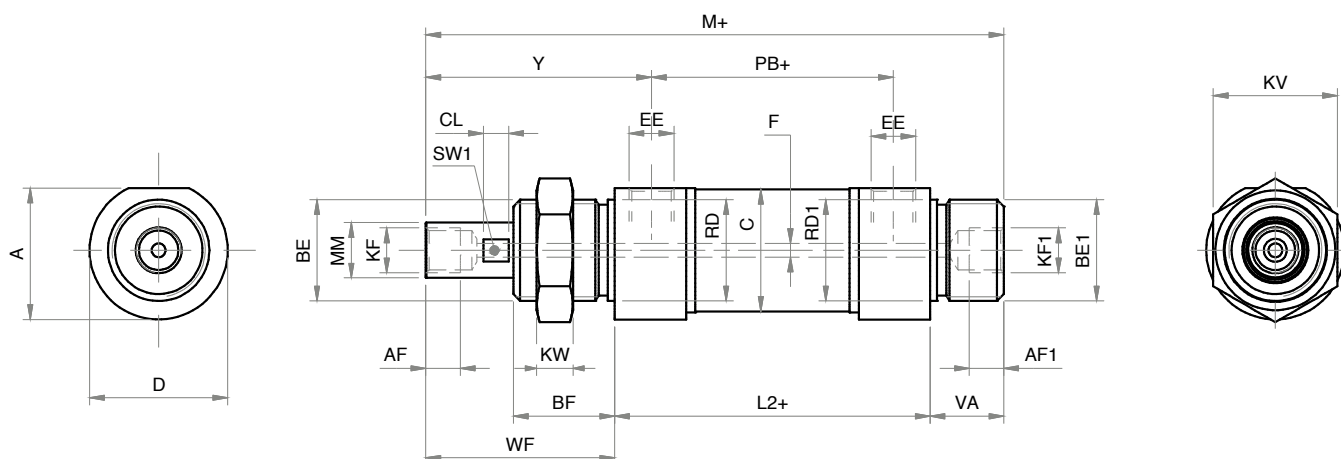
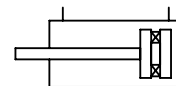


**CILINDRO D.E.M. STELO FORATO**

ODM-FT

**CYLINDER WITH HOLLOW ROD D.A.M.**


Note: stelo in C45 cromato

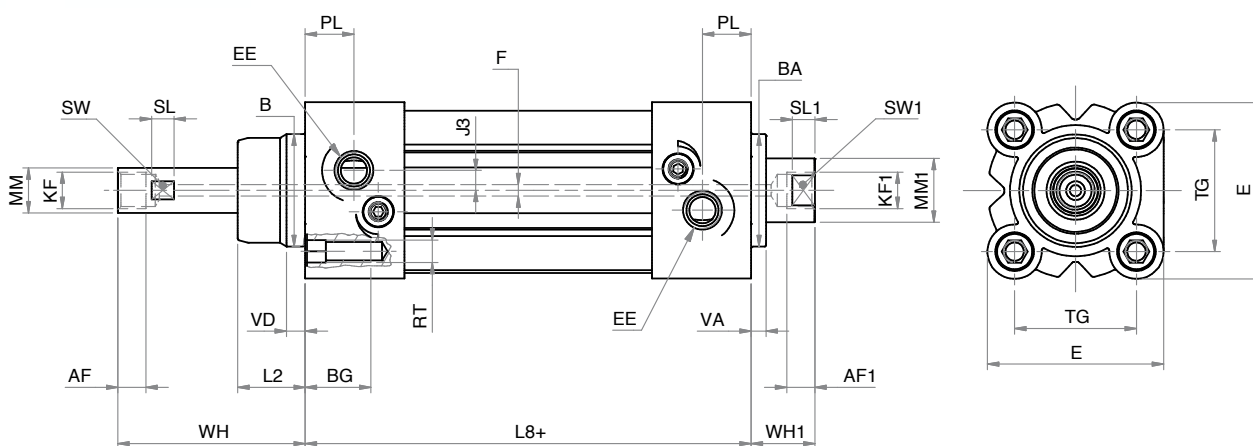
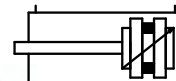
Note: C45 chromed rod

**DIMENSIONI - DIMENSIONS**

A	28,5
AF	7,5
AF1	7,5
BE	M22x1,5
BE1	M22x1,5
BF	22
ØC	26,5
CL	5,5
CL1	8
ØD	30
EE	G 1/8"
F	3
KF	G 1/8"
KF1	G 1/8"
KV	27
L2+	68
M+	125
ØMM	12
PB+	52
ØRD	22
ØRD1	22
SW1	11
VA	16
Y	49
VA	16
Y	49

**Ø CORSE STANDARD - STANDARD STROKES**
**025** 50 - 100 - 150 - 200 - 250 - 300 - 350

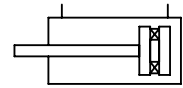
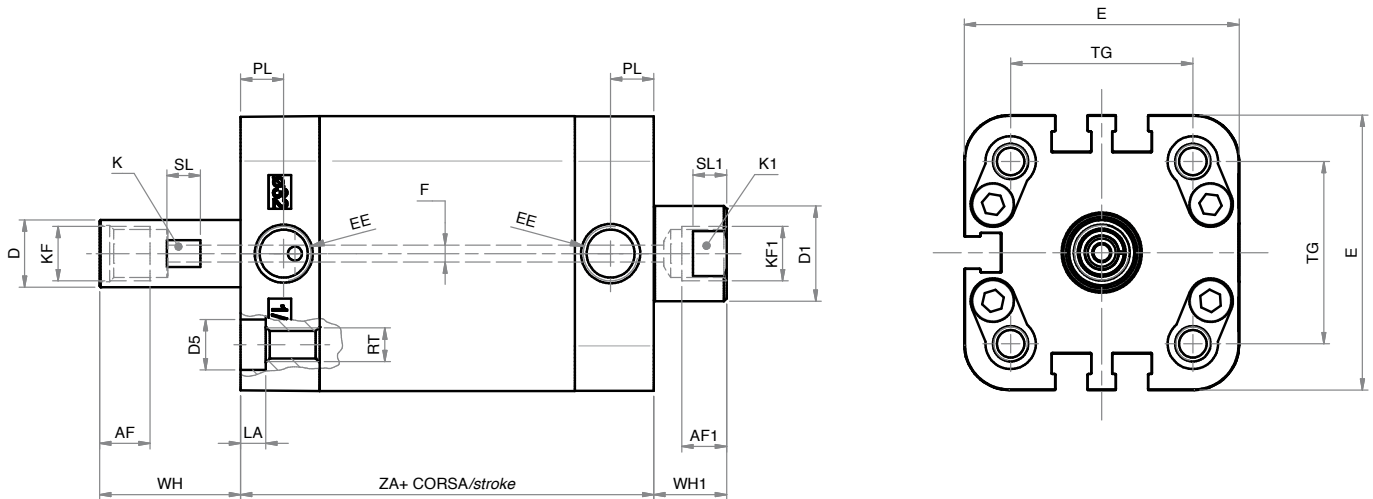
**CILINDRO D.E.M. STELO FORATO**
**CYLINDER WITH HOLLOW ROD D.A.M.**

 SERIE  
**H**

**DIMENSIONI - DIMENSIONS**

<b>Ø</b>	032
<b>AF</b>	7,5
<b>AF1</b>	7,5
<b>Ø B</b>	30
<b>Ø BA</b>	30
<b>BG</b>	16
<b>E</b>	47
<b>EE</b>	G 1/8"
<b>F</b>	3
<b>J3</b>	5,3
<b>KF</b>	G 1/8"
<b>KF1</b>	G 1/8"
<b>L2</b>	18
<b>L8+</b>	94
<b>Ø MM</b>	12
<b>Ø MM1</b>	17
<b>PL</b>	13
<b>RT</b>	M6
<b>SL</b>	6
<b>SL1</b>	6
<b>SW</b>	11
<b>SW1</b>	15
<b>TG</b>	32,5
<b>VA</b>	4
<b>VD</b>	5
<b>WH</b>	50
<b>WH1</b>	17

**Ø CORSE STANDARD - STANDARD STROKES**
**032 50 - 100 - 150 - 200 - 250 - 300 - 350**

+ = lunghezza corsa - stroke length

**CILINDRO D.E.M. STELO FORATO**
**CYLINDER WITH HOLLOW ROD D.A.M.**

**SERIE P**


Note: stelo in acciaio inox 304 cromato

Note: chromed AISI 304 stainless steel rod

**DIMENSIONI - DIMENSIONS**

Ø	32
AF	9
AF1	7,5
ØD	12
ØD1	12
ØD5	9
E	49
EE	G 1/8"
ØF	3
K	11
K1	15
KF	G 1/8"
KF1	G 1/8"
LA	5
PL	7,5
RT	M6
SL	6
SL1	6
TG	32,5
WH	25
WH1	13
ZA+	50
TG	32,5
VA	4
VD	5
WH	50
WH1	17

**Ø CORSE STANDARD - STANDARD STROKES**
**032** 50 - 100 - 150 - 200 - 250 - 300 - 350

+ = aggiungere lunghezza corsa (mm) - add stroke length (mm)